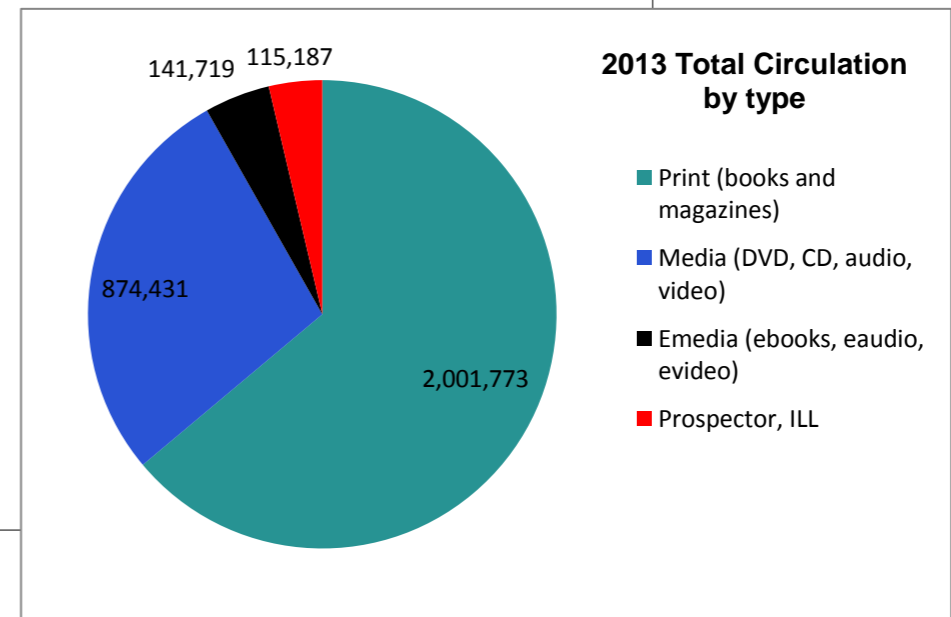
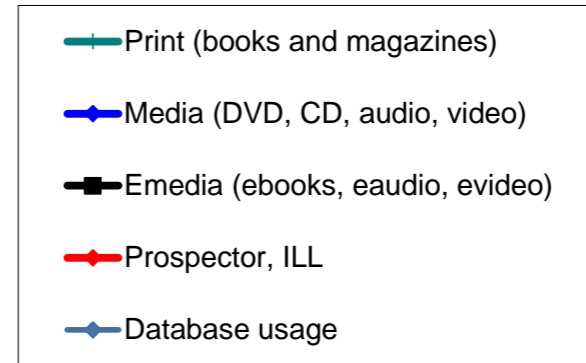
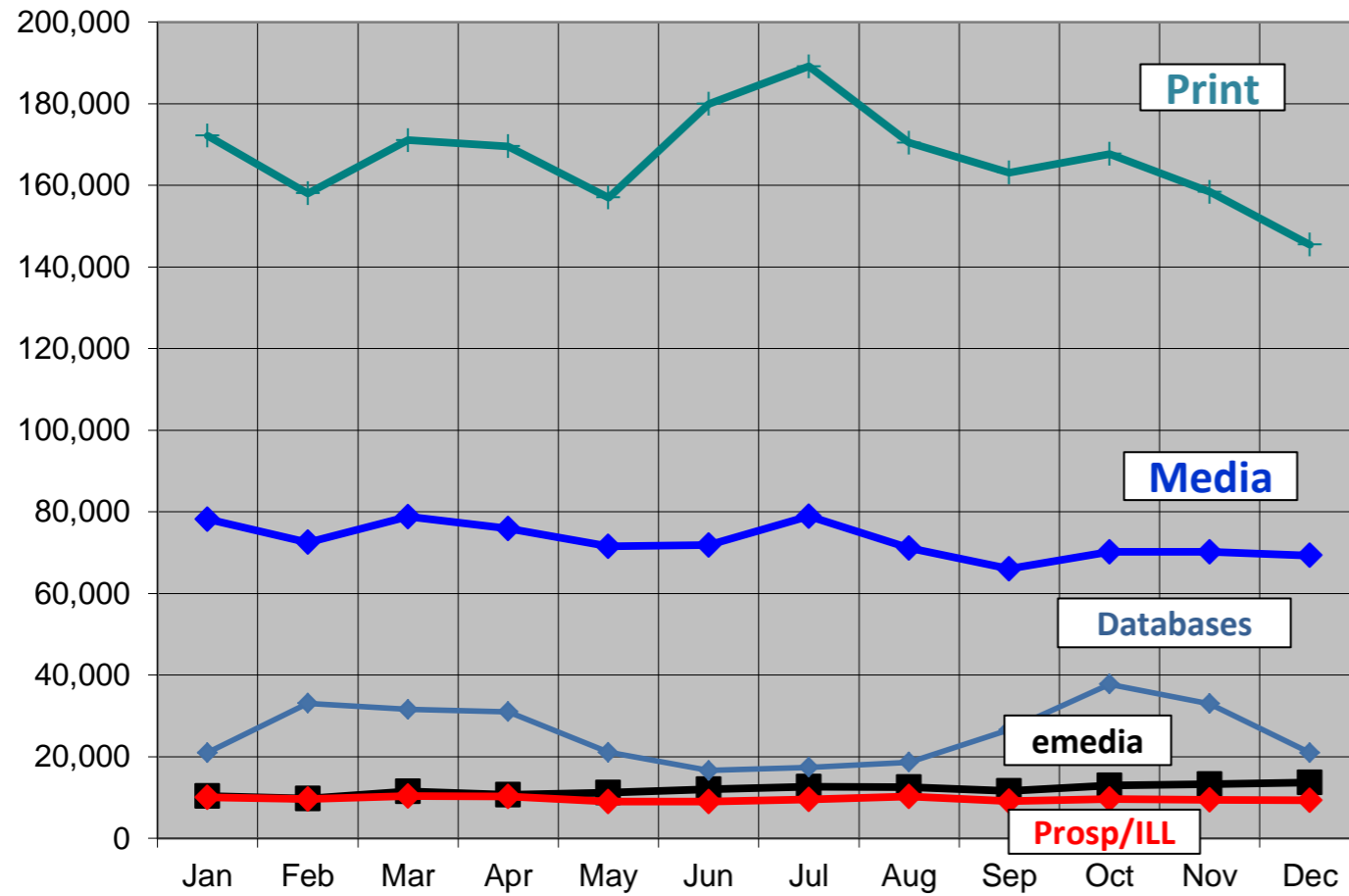


2013 Monthly Activity Report

Borrowers		January	February	March	April	May	June	July	August	Sept	October	November	December	Y-T-D
Total		135,139	136,234	137,180	138,309	139,269	140,617	141,928	143,555	144,885	146,213	147,173	140,912	
Purged/Deleted		122	68	135	41	96	190	444	69	66	82	154	7,063	8,530
New		1,480	1,163	1,081	1,170	1,056	1,538	1,422	1,696	1,396	1,410	1,114	802	15,328
Collection (print & media)														
Added		3,628	3,682	4,328	4,224	4,966	4,137	4,011	4,124	3,851	3,774	3,697	2,943	47,365
Removed		2,820	210	208	141	140	21,563	4,793	3,621	4,143	4,425	5,139	507	47,710
Total number of items (end of month)		403,146	406,553	410,692	414,763	419,583	402,128	401,337	401,824	402,169	400,915	399,363	401,676	
Computer Usage														
Sign up computer sessions		18,382	17,751	17,881	17,304	17,075	17,264	19,280	18,814	15,643	19,250	16,561	16,321	211,526
Sign up computer number of hours		10,507	10,101	10,337	9,964	9,681	9,652	10,920	10,008	9,146	11,125	9,605	6,464	117,510
Wireless		7,973	10,192	9,979	10,762	9,788	8,296	9,337	10,260	11,672	13,359	11,562	9,167	122,347
Door Traffic		90,867	90,336	98,708	99,628	90,840	98,098	106,807	101,915	95,193	104,750	82,724	83,553	1,143,419
eMedia Circulation														
ebooks		8,121	7,235	8,503	8,033	8,350	9,017	9,442	9,200	8,525	9,315	9,503	10,116	105,360
eaudiobooks		2,142	2,008	2,343	2,047	2,180	2,289	2,524	2,585	2,380	2,549	2,643	2,700	28,390
emusic		9	7	5	2	2	5	3	2	3	1	3	1	43
evideo		18	7	8	5	5	3	7	3	8	4	5	6	79
emagazine			409	631	586	614	721	644	710	628	1,044	1,068	792	7,847
TOTAL		10,290	9,666	11,490	10,673	11,151	12,035	12,620	12,500	11,544	12,913	13,222	13,615	141,719
Database Usage														
Sessions/Searches		20,951	33,043	31,547	31,010	21,068	16,608	17,378	18,603	26,568	37,742	32,949	20,964	308,431
Programming														
<i>Attendance</i>														
Children's		3735	3008	3024	2984	2601	2879	5058	70	2979	3619	2629	1893	34,479
Teen		23	45	2	48	19	191	93	22	50	97	21	40	651
Adult		635	1026	1001	559	651	561	420	737	782	1912	481	345	9,110
All Ages		138	282	575	327	181	65	282	124	96	356	500	148	3,074
Outreach		984	801	1123	906	4455	891	NA	NA	596	1315	1126	1286	13,483
TOTAL		5,515	5,162	5,725	4,824	7,907	4,587	5,853	953	4,503	7,299	4,757	3,712	60,797
<i>Number of Programs</i>														
Children's		105	97	84	107	91	53	75	3	97	122	83	64	981
Teen		2	2	1	3	2	9	5	2	3	5	1	2	37
Adult		24	31	27	25	19	24	14	22	33	60	13	9	301
All Ages		6	7	6	8	3	7	6	2	2	4	9	4	64
Outreach		59	55	58	49	70	60	NA	NA	39	65	52	49	556
TOTAL		196	192	176	192	185	153	100	29	174	256	158	128	1,939
1st Quarter Volunteer Services														
Number of volunteer hours				2,914			3,978			4,903				11,795
Number of volunteers				266			335			448				1,049
Recycled materials (in pounds)		3,228	3,059	5,107	2,137	4,502	3,606	NA	5,140	NA	4,349	8,000	2,315	41,443

2013 Circulation by Type and Database Usage

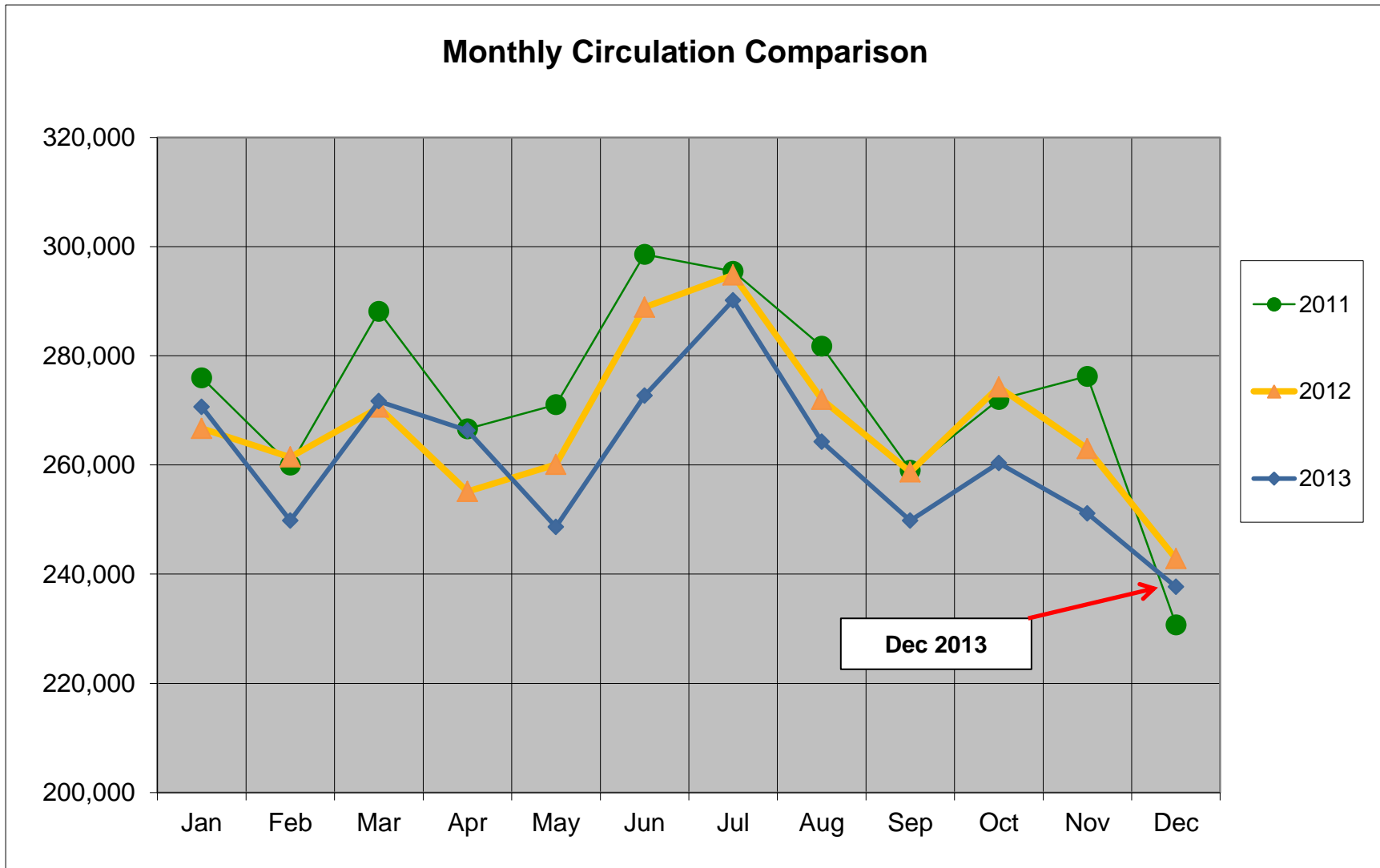


Print (books and magazines)
 Media (DVD, CD, audio, video)
 Emedia (ebooks, eaudio, evideo)
 Prospector, ILL
 Total Circulation
 Database usage

	Jan	Feb	Mar	Apr	May	Jun	Jul	Aug	Sep	Oct	Nov	Dec	Total
Print (books and magazines)	172,153	157,999	171,062	169,544	156,969	179,914	189,128	170,419	163,105	167,656	158,372	145,452	2,001,773
Media (DVD, CD, audio, video)	78,206	72,518	78,804	75,899	71,485	71,798	78,899	71,147	66,037	70,202	70,136	69,300	874,431
Emedia (ebooks, eaudio, evideo)	10,290	9,666	11,490	10,673	11,151	12,035	12,620	12,500	11,544	12,913	13,222	13,615	141,719
Prospector, ILL	9,994	9,622	10,311	10,185	9,026	8,955	9,504	10,196	9,122	9,573	9,379	9,320	115,187
Total Circulation	270,643	249,805	271,667	266,301	248,631	272,702	290,151	264,262	249,808	260,344	251,109	237,687	3,133,110
Database usage	20,951	33,043	31,547	31,010	21,068	16,608	17,378	18,603	26,568	37,742	32,949	20,964	308,431

Total Circulation Chart

Includes circulation of print, media and emedia



	Jan	Feb	Mar	Apr	May	Jun	Jul	Aug	Sep	Oct	Nov	Dec	Total	% increase Y-T-D
2011	275,975	260,005	288,151	266,615	271,044	298,580	295,470	281,755	259,052	271,997	276,243	230,740	3,275,627	
2012	266,673	261,436	270,562	255,139	260,073	288,896	294,807	272,001	258,715	274,271	262,979	242,838	3,208,390	-2.05%
2013	270,643	249,805	271,667	266,301	248,631	272,702	290,151	264,262	249,808	260,344	251,109	237,687	3,133,110	-2.35%