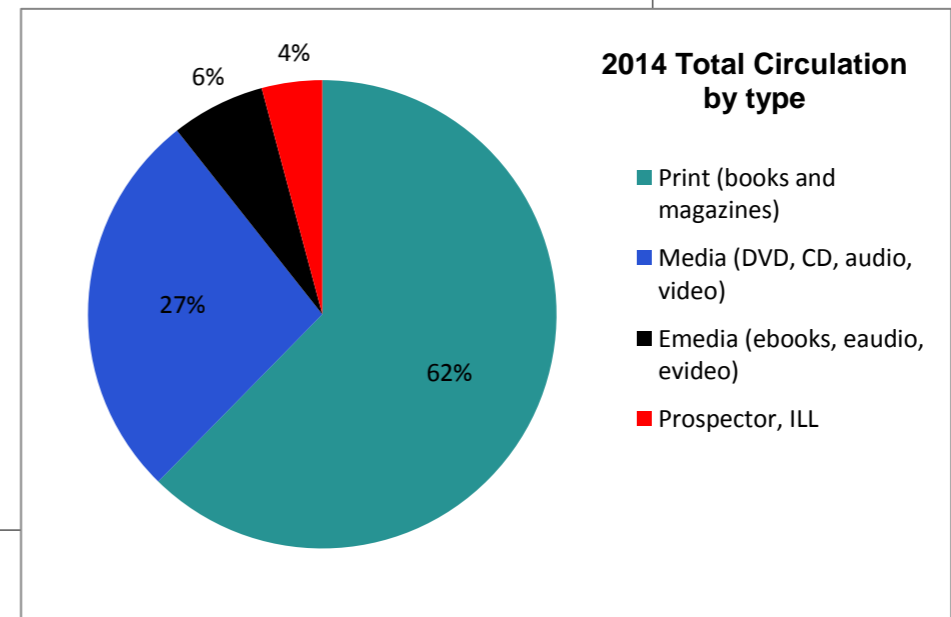
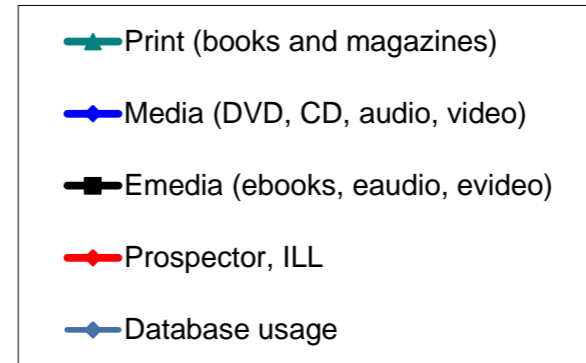
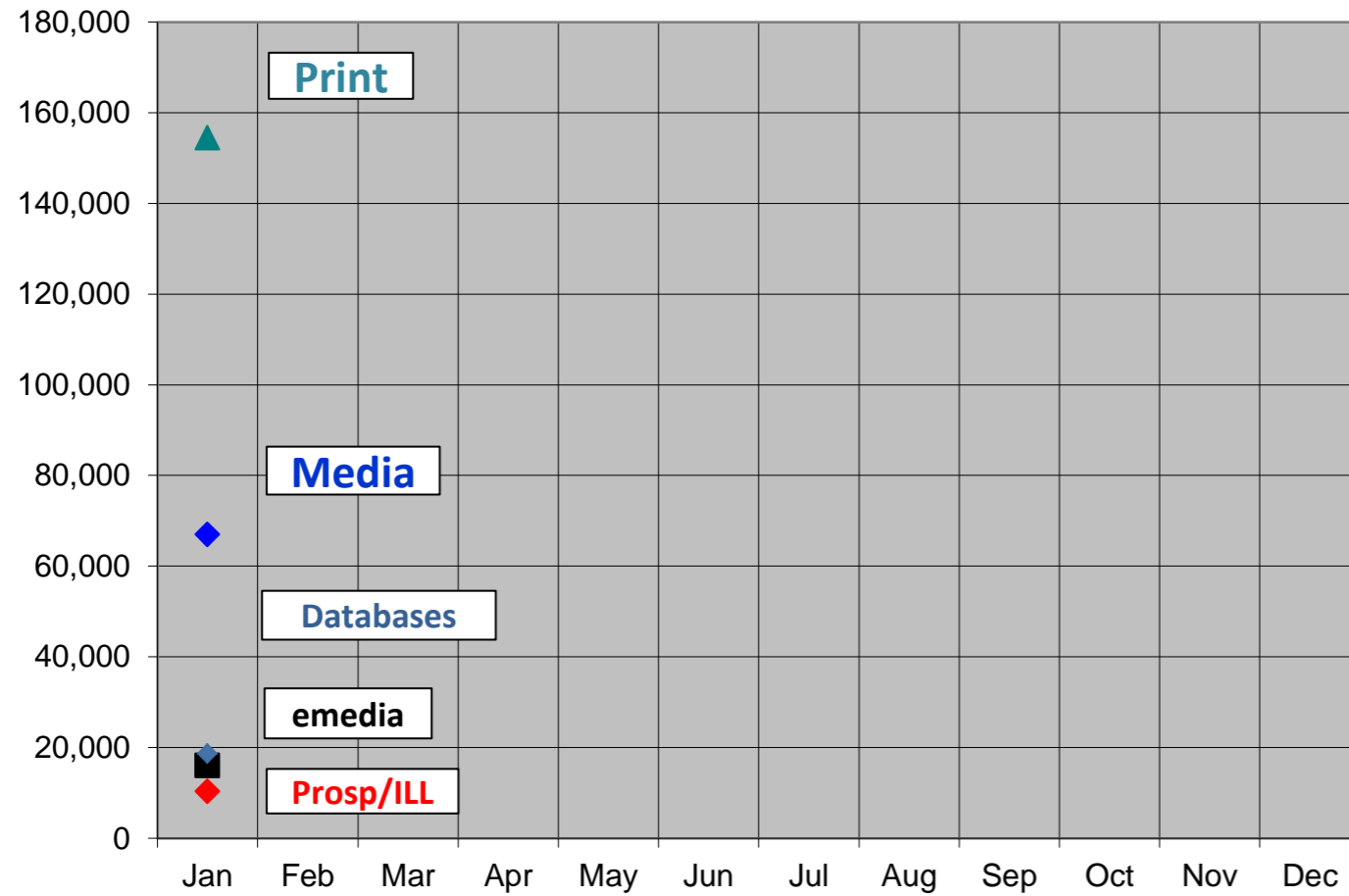


## 2014 Monthly Activity Report

Borrowers		January	February	March	Y-T-D
	Total	142,187			
	Purged/Deleted	96			96
	New	1,371			1,371
<b>Collection (print &amp; media)</b>	Added	2,886			2,886
	Removed	8,614			8,614
	Total number of items (end of month)	396,068			
<b>Computer Usage</b>					
	Sign up computer sessions	17,124			17,124
	Sign up computer number of hours	10,114			10,114
	Wireless	10,798			10,798
<b>Door Traffic</b>		90,585			90,585
<b>eMedia Circulation</b>	ebooks	12,086			12,086
	eaudiobooks	3,033			3,033
	emusic	2			2
	evideo	6			6
	emagazine	928			928
	<b>TOTAL</b>	16,055	0	0	16,055
<b>Database Usage</b>	Sessions/Searches	18,657			18,657
<b>Programming</b>					
	<i>Attendance</i>				
	Children's				0
	Teen				0
	Adult				0
	All Ages				0
	Outreach				0
	<b>TOTAL</b>	0	0	0	0
	<i>Number of Programs</i>				
	Children's				0
	Teen				0
	Adult				0
	All Ages				0
	Outreach				0
	<b>TOTAL</b>	0	0	0	0
<b>1st Quarter Volunteer Services</b>					
	Number of volunteer hours				0
	Number of volunteers				0
<b>Recycled materials (in pounds)</b>		1,882			1,882

### 2014 Circulation by Type and Database Usage



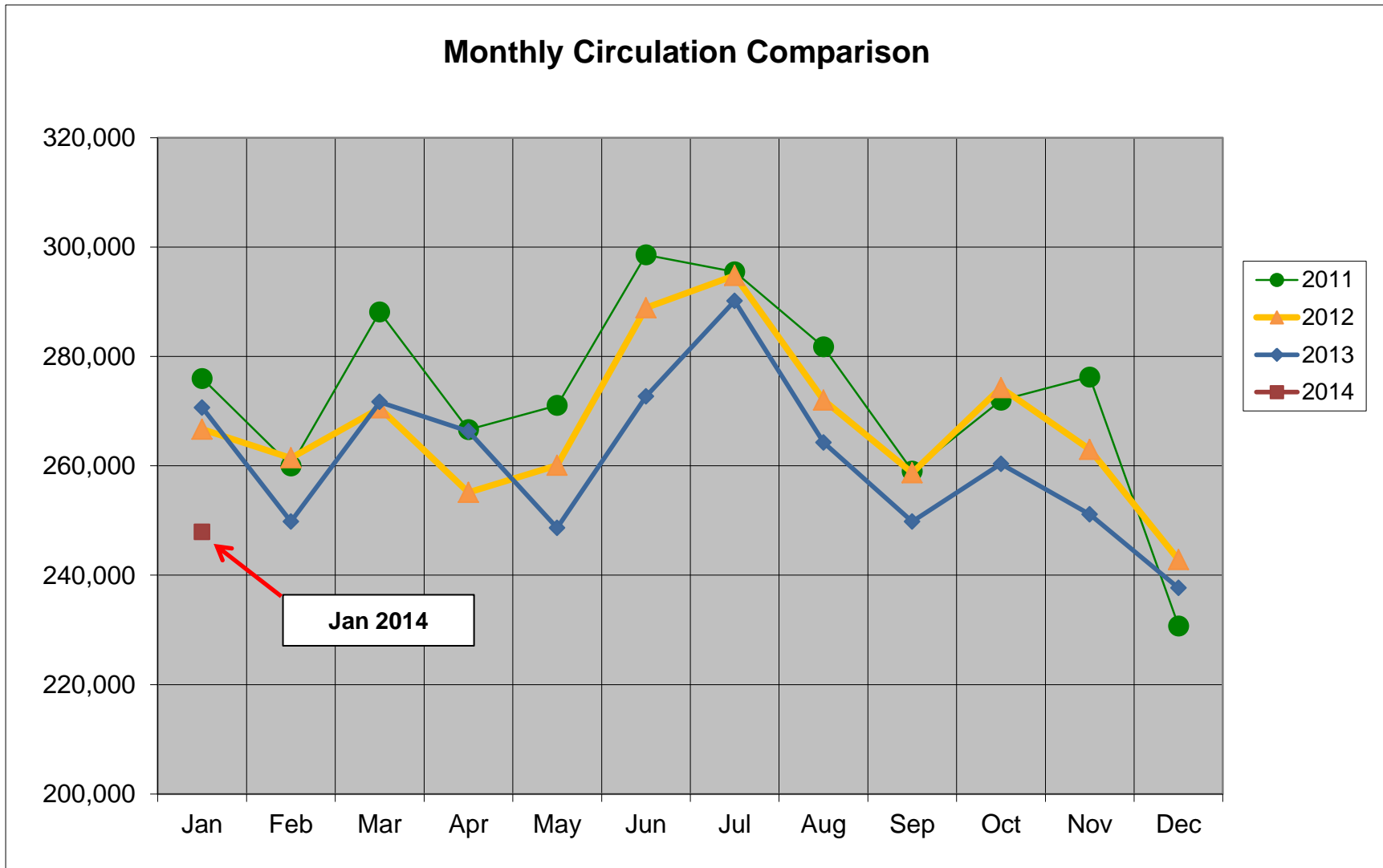
Print (books and magazines)  
 Media (DVD, CD, audio, video)  
 Emedia (ebooks, eaudio, evideo)  
 Prospector, ILL  
 Total Circulation  
 Database usage

	Jan	Feb	Mar	Apr	May	Jun	Jul	Aug	Sep	Oct	Nov	Dec	Total
Print (books and magazines)	154,534												154,534
Media (DVD, CD, audio, video)	66,969												66,969
Emedia (ebooks, eaudio, evideo)	16,055												16,055
Prospector, ILL	10,337												10,337
<b>Total Circulation</b>	<b>247,895</b>												<b>247,895</b>
Database usage	18,657												18,657

62%  
 27%  
 6%  
 4%

# Total Circulation Chart

Includes circulation of print, media and emedia



	Jan	Feb	Mar	Apr	May	Jun	Jul	Aug	Sep	Oct	Nov	Dec	Total	% increase Y-T-D
2011	275,975	260,005	288,151	266,615	271,044	298,580	295,470	281,755	259,052	271,997	276,243	230,740	3,275,627	
2012	266,673	261,436	270,562	255,139	260,073	288,896	294,807	272,001	258,715	274,271	262,979	242,838	3,208,390	-2.05%
2013	270,643	249,805	271,667	266,301	248,631	272,702	290,151	264,262	249,808	260,344	251,109	237,687	3,133,110	-2.35%
2014	247,895												<b>247,895</b>	<b>-8.41%</b>