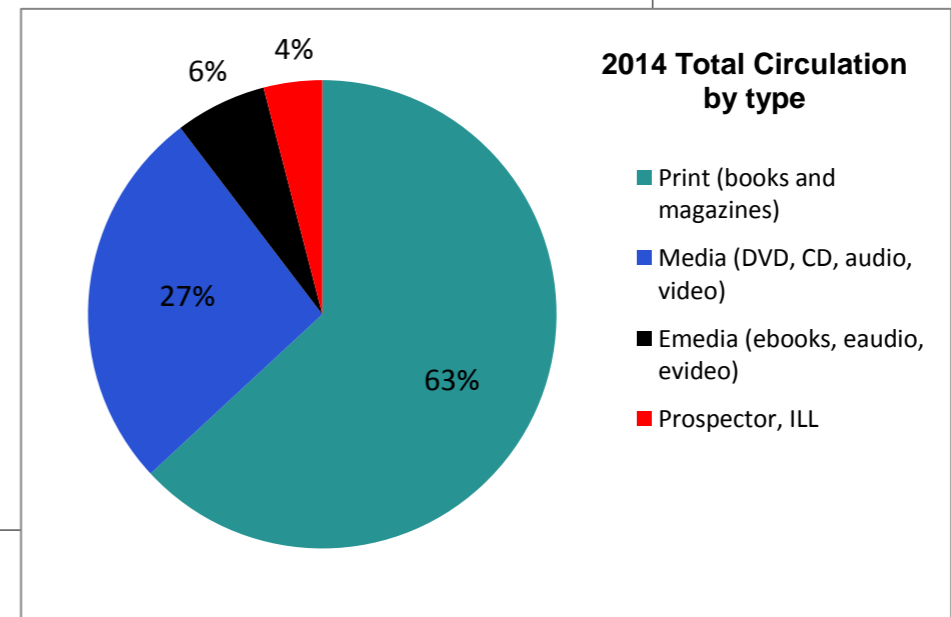
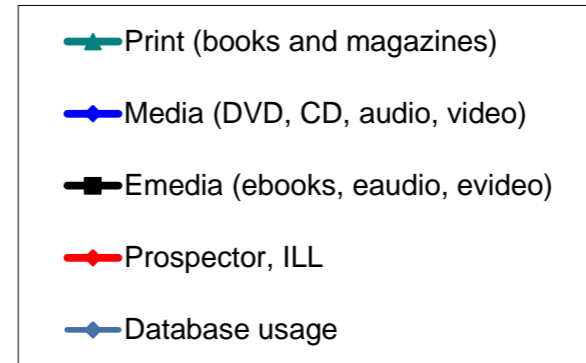
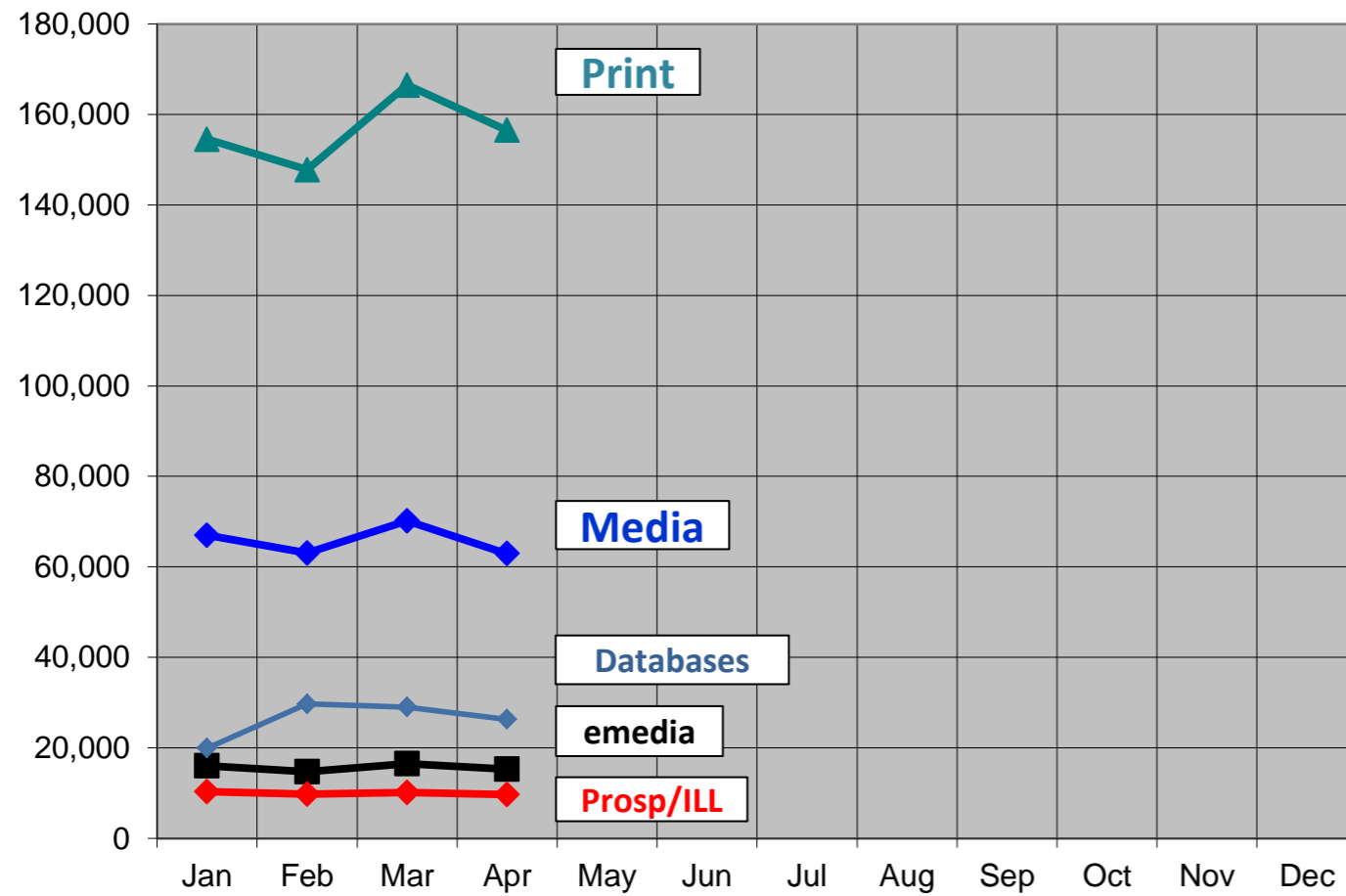


## 2014 Monthly Activity Report

<b>Borrowers</b>		<b>January</b>	<b>February</b>	<b>March</b>	<b>April</b>	<b>Y-T-D</b>
	Total	142,187	143,371	144,464	145,521	
	Purged/Deleted	96	86	77	76	<b>335</b>
	New	1,371	1,270	1,200	1,102	<b>4,943</b>
<b>Collection (print &amp; media)</b>	Added	2,886	3,539	3,987	4,711	<b>15,123</b>
	Removed	8,614	2,938	3,563	551	<b>15,666</b>
	Total number of items (end of month)	396,068	396,752	397,220	401,439	
<b>Computer Usage</b>						
	Sign up computer sessions	17,124	17,092	18,373	17,176	<b>69,765</b>
	Sign up computer number of hours	10,114	10,222	10,775	10,357	<b>41,468</b>
	Wireless	10,798	13,371	12,712	14,298	<b>51,179</b>
<b>Door Traffic</b>		<b>90,585</b>	<b>93,975</b>	<b>103,861</b>	<b>101,041</b>	<b>389,462</b>
<b>eMedia Circulation</b>	ebooks	12,086	10,981	12,322	11,266	<b>46,655</b>
	eaudiobooks	3,033	2,741	3,494	3,282	<b>12,550</b>
	emusic	2	2	2	1	<b>7</b>
	evideo	6	3	11	3	<b>23</b>
	emagazine	928	1,025	656	724	<b>3,333</b>
	<b>TOTAL</b>	<b>16,055</b>	<b>14,752</b>	<b>16,485</b>	<b>15,276</b>	<b>62,568</b>
<b>Database Usage</b>	Sessions/Searches	19,936	29,716	29,024	26,306	<b>131,288</b>
<b>Programming</b>						
	<i>Attendance</i>					
	Children's	3066	3130	2198		<b>8,394</b>
	Teen	41	74	13		<b>128</b>
	Adult	739	794	429		<b>1,962</b>
	All Ages	65	389	0		<b>454</b>
	Other Locations			1000		<b>1,000</b>
	Outreach	974	1202	2314		<b>4,490</b>
	<b>TOTAL</b>	<b>4,885</b>	<b>5,589</b>	<b>5,954</b>		<b>16,428</b>
	<i>Number of Programs</i>					
	Children's	109	106	70		<b>285</b>
	Teen	2	4	2		<b>8</b>
	Adult	30	30	14		<b>74</b>
	All Ages	3	8	0		<b>11</b>
	Other Locations			1		<b>1</b>
	Outreach	40	53	56		<b>149</b>
	<b>TOTAL</b>	<b>184</b>	<b>201</b>	<b>143</b>		<b>528</b>
<b>Volunteer Services (by quarter)</b>						
	Number of volunteer hours				3,721	<b>3,721</b>
	Number of volunteers				342	<b>342</b>
<b>Recycled materials (in pounds)</b>		1,882	1,915	5,572		<b>9,369</b>

### 2014 Circulation by Type and Database Usage



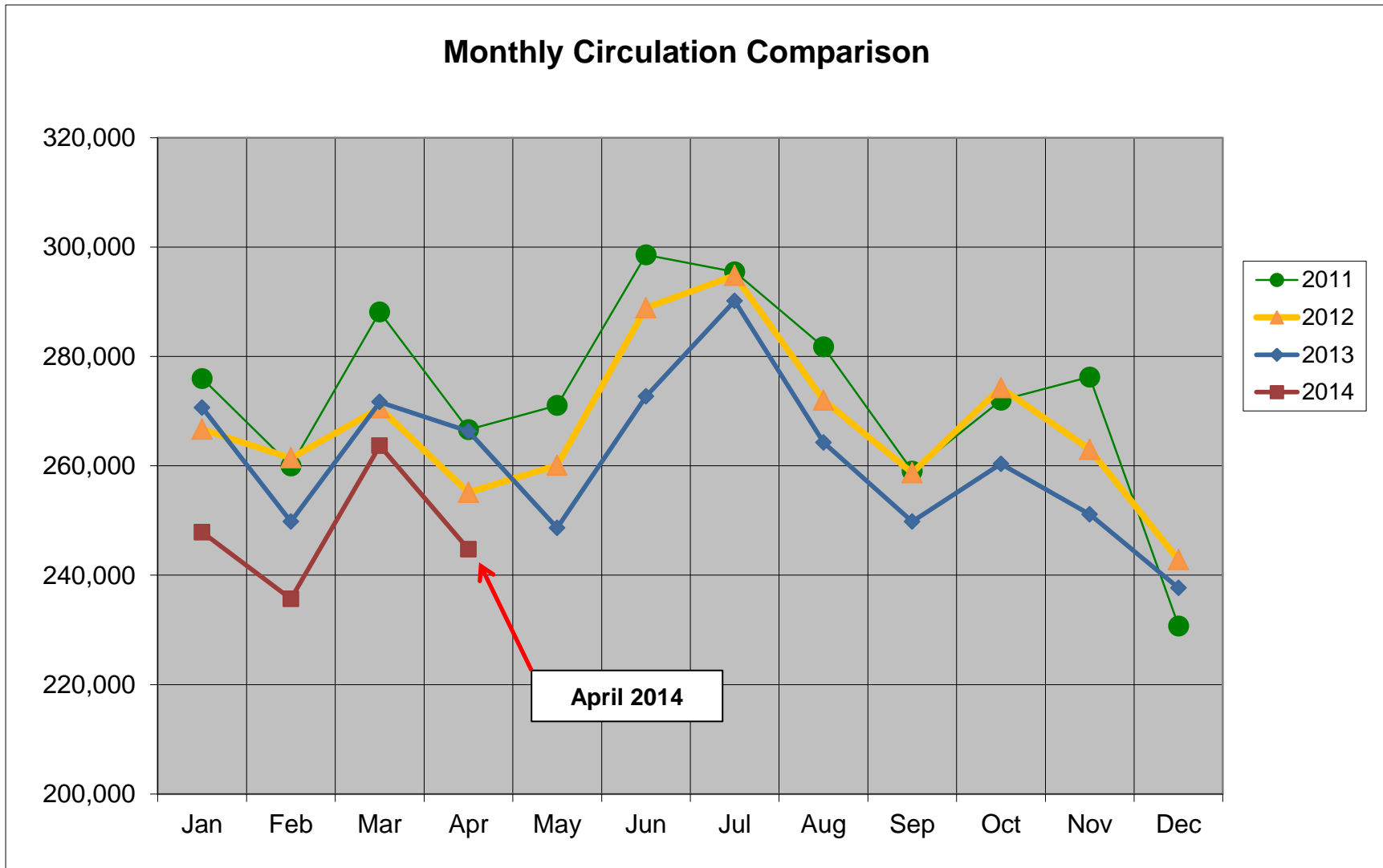
**2014**  
 Print (books and magazines)  
 Media (DVD, CD, audio, video)  
 Emedia (ebooks, eaudio, evideo)  
 Prospector, ILL  
 Total Circulation  
 Database usage

	Jan	Feb	Mar	Apr	May	Jun	Jul	Aug	Sep	Oct	Nov	Dec	Total
Print (books and magazines)	154,534	147,792	166,499	156,527									<b>625,352</b>
Media (DVD, CD, audio, video)	66,969	63,035	70,175	62,924									<b>263,103</b>
Emedia (ebooks, eaudio, evideo)	16,055	14,752	16,485	15,276									<b>62,568</b>
Prospector, ILL	10,337	9,806	10,187	9,711									<b>40,041</b>
<b>Total Circulation</b>	<b>247,895</b>	<b>235,385</b>	<b>263,346</b>	<b>244,438</b>									<b>991,064</b>
Database usage	19,936	29,716	29,024	26,306									<b>104,982</b>

63%  
 27%  
 6%  
 4%

# Total Circulation Chart

Includes circulation of print, media and emedia



	Jan	Feb	Mar	Apr	May	Jun	Jul	Aug	Sep	Oct	Nov	Dec	Total	% increase Y-T-D
2011	275,975	260,005	288,151	266,615	271,044	298,580	295,470	281,755	259,052	271,997	276,243	230,740	3,275,627	
2012	266,673	261,436	270,562	255,139	260,073	288,896	294,807	272,001	258,715	274,271	262,979	242,838	3,208,390	-2.05%
2013	270,643	249,805	271,667	266,301	248,631	272,702	290,151	264,262	249,808	260,344	251,109	237,687	3,133,110	-2.35%
2014	247,835	235,674	263,674	244,743									<b>991,926</b>	<b>-6.28%</b>